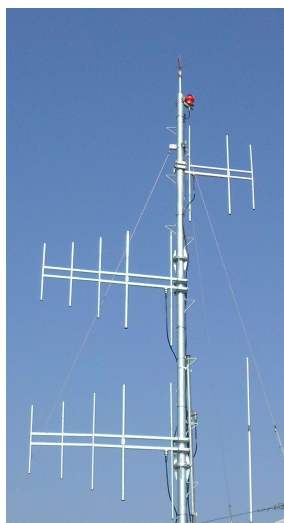




## FM Yagi (JFY-3, JFY-5) Antenna

### Specifications

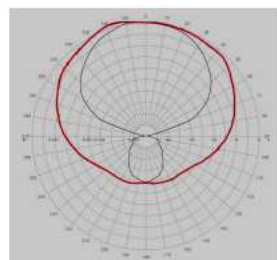
Electrical & Mechanical	JFY-3	JFY-5
Frequency range	87.5 ~ 108 MHz (FM All Band)	87.5 ~ 108 MHz (FM All Band)
Input Connector	N-female, 7/8" EIA Flange	N-female, 7/8" EIA Flange
Impedance	50Ω	50Ω
VSWR	≤ 1.2	≤ 1.2
Gain (ref. to half wave dipole)	4.5dB	6.5dB
Polarization	Horizontal or Vertical	Horizontal or Vertical
Input power (Max)	500W or 2500W	500W or 2500W
Radiation pattern at mid-band		
- Vertical	100°	80°
- Horizontal	120°	60°
Material	JFY-3	JFY-5
Lightning protection	All metal part are DC grounded	All metal part are DC grounded
Internal part	Brass and PTFE	Brass and PTFE
External part	Hot galvanized steel	Hot galvanized steel
External insulator	PTFE	PTFE
Brackets	Hot-dip galvanized steel	Hot-dip galvanized steel
Mounting	To pipes of 60~125mm	To pipes of 60~125mm
Weight	14kg	18kg
Dimensions (W x H x D)	1800 x 1270 x 60 mm	1800 x 2000 x 60 mm
Wind velocity (Max)	230km/h	200km/h



Yeongjongdo Site



JFY-3



JFY-5

